

Faith Lutheran Church

Voters' Meeting Information

May 22, 2022

Includes Financial information through March 2022

Mission Statement

Know Christ

Live Christ

Make Christ Known

Table of Contents

Vision Statement

Core Values

Agenda

Minutes of November 14, 2021 Voters' Assembly

Minutes of January 20, 2022 Special Called Voters' Assembly

Minutes of February 20, 2022 Special Called Voters' Assembly

Chairman's Report

Called Staff Reports

Board, Council and Committee Reports

Gifts and Endowments Report

Information Pertaining to the Proposed Sponsoring of a Ukrainian Refugee Family

Information Pertaining to a Revised Columbarium Proposal

Information Pertaining to a Proposed Education Wing Reconfiguration Plan

Balance Sheet

Statement of Income and Expenses (Profit & Loss Report)

Budget Report, Year to Date

Vision Statement

As Jesus' disciples, guided and empowered by the Holy Spirit, we grow in our faith, as we:

- **Celebrate** Christ-centered worship, faithful to our heritage,
 - **Gather** for fruitful Bible study,
 - **Connect** with God through prayer and stewardship, and
 - **Build** Christ's Kingdom through relationships, witness, and service!
-

Core Values

1. **Biblical, Grace oriented Teaching** – Bible-centered preaching and teaching which changes lives is at the heart of our ministry.
2. **Passionate Spirituality** – God is transforming us into passionate disciples of Christ who continually study His word and live out faith with prayer, action, and contagious enthusiasm.
3. **Empowering Servant Leadership** – Our Pastors, staff and volunteer lay leaders are empowering servant -leaders who equip and release people to use all their gifts, abilities, and resources in God's service.
4. **Inspiring Worship** – We value vibrant worship done with excellence that lifts Christ and the spirits of those who worship through Word and Sacraments.
5. **Prayer Centered** -- We are a praying church.
6. **Family Oriented** – Children, youth, and their families are prized and cherished here.
7. **Loving Relationships** – We believe that building loving relationships centered in Jesus is key to spiritual growth, Christian nurture, and evangelism.
8. **Courageous Faith** – We are a bold church, praying and trusting God to lead us as we try new ways and structures to accomplish God's mission.
9. **Shared outreach mindset** – Lost people matter to God and us, and therefore sharing Jesus with those who don't know him is everyone's priority.

Agenda for Spring-Summer 2022 Voters' Assembly

1. Welcome, Opening Prayer, and Introduction of New Members
2. Explanation of Voter Packet Contents
3. Review and Approve Minutes of Previous Meetings
4. Receive Update on Progress of Capital Campaign VI
5. Receive Update on Associate Pastor Call Process
6. Receive Update on Current Financial Status and Budget Performance to Date
7. Discuss and Act on Sponsoring a Ukrainian Immigrant Family
8. Discuss and Act on Expanding Bookkeeper Duties and Converting the Position from Contract to Part-Time Employee
9. Discuss and Act on Proposal to Construct a Columbarium on the Faith Campus
10. Discuss and Act on Remodeling the Education Wing to Accommodate Children's Sunday School and Preschool Classroom Requirements
11. Discuss and Act on Remodeling the Activity Center Classrooms to Accommodate Adult Bible Study and Organizational Meetings and Activities
12. Discuss and Provide Guidance on Long-Term Accessibility Options for the Activity Center
13. Closing Prayer and Adjournment

Minutes of the 2021 Fall/Winter Voters' Assembly

November 14, 2021

Voters' Assembly Actions

Approved Called position of Director of Christian Outreach and Youth Ministry

Approved Called position of Director of Music and Parish Administration

Approved the proposed 2022 congregational budget

94 Attendees

The meeting was called to order at 12:16 p.m. by Bill Fuller, Congregational Chairman. Pastor Pohland opened with prayer.

Bill presented the agenda to the assembly.

Minutes from the May 16, 2021 meeting were approved.

New members were welcomed by the assembly.

Bill reviewed the 2021 financial reports.

Ron Jiede gave an update of Giving Abundantly, Growing Abundantly (Capital Campaign V). GAGA comes to a close on December 31, 2021. Congregational members pledged \$543,000 for this campaign. As of October 31, 2021 \$515,000 has been received. \$1,100,000 remains on the original loan of \$3,700,000. Kristi Kirk is serving as campaign chairperson for Campaign VI. Several members of GAGA will also be serving on Campaign VI. Bill thanked the members of the Campaign V committee for doing a tremendous job and the congregation for being faithful to their pledges.

Bill encouraged everyone to read all of the Board reports if they hadn't already done so.

The Call Description for Director of Music and Parish Administration and Director of Christian Outreach and Youth Ministry were presented and discussed. Pastor Pohland has been working with the Texas District Office on these call descriptions. Both positions are synodically approved/recognized ministries. Both positions are included in the 2022 budget. Bill explained the difference between Called workers and contract workers. After some discussions the Called position of Director of Christian Outreach and Youth Ministry was approved. The Called position of Director of Music and Parish Ministry was also approved. The Call Committee can now accept nominations for these positions. The Call Committee will then make recommendations to the congregation. A Voters' Assembly for the purpose of extending these Calls is tentatively set for Sunday, January 30, 2022.

Bill explained the key changes to the 2022 budget. The biggest changes were in the areas of outreach, worship, property, employee expense. The proposed budget was approved.

Bill presented the slate of officers for 2022. The slate was approved.

Pastor Pohland discussed the opportunity that Faith has to have a retired chaplain as an intern for four months (July-October, 2022) Lt. Col. Donald W. Ehrke is retiring and would like to explore civilian parish ministry. All expenses for this internship would be paid for by the military.

Pastor Crowe closed the meeting with prayer. The meeting was adjourned at 1:30 p.m.

Respectfully submitted,

Jane Anne Pohl, Recording Secretary

Minutes of the Special Called Voters' Assembly

January 30, 2022

Voters' Assembly Actions

Approved Call to Adam Perez to be Director of Music and Parish Administration

Approved Call to Austin Angerman to be Director of Christian Outreach and Youth Ministry

95 members were present.

Bill Fuller called the meeting to order at 12:10 p.m. Pastor Pohland opened the meeting with prayer. In his devotion Pastor explained the Biblical basis for our Call Process. (Acts 1, Acts 6, Acts 13)

James Sanborn chaired the Call Committee. The Call Committee developed job descriptions for both positions, accepted names for both positions, and decided who would be recommended to the voters.

Adam Perez was recommended by the Call Committee for the position of Director of Music and Parish Administration. He was not yet qualified for a call when he first came to Faith Lutheran Church. He has now met all requirements to be qualified for a call. The Voters approved calling Adam Perez for the position of Director of Music and Parish Administration.

The Call Committee recommended calling Austin Angerman for the position of Director of Community Outreach and Youth Ministry. The Voters approved extending the call to Austin Angerman.

Bill Fuller thanked the Call Committee for their work.

Pastor Pohland led the Assembly in singing the Doxology.

The meeting was adjourned at 12:33 p.m.

Respectfully submitted,
Jane Anne Pohl, Recording Secretary

Minutes of the Special Called Voters' Assembly

February 20, 2022

Voters' Assembly Actions

Approved Call to Joseph Bluege to be Associate Pastor

110 members were present at the meeting.

Sue Burton, Vice Chair of the congregation, called the meeting to order at 12:22 p.m. Pastor Pohland opened with prayer.

Three new members were introduced: Susie Logan, Jerry and Cheryl Walters.

Pastor Pohland explained the process for requesting a candidate from the seminary. The Council of Presidents (35 District Presidents) meet to review the list of candidates and their special skills and preferences and the list of congregation requests and their needs. The COP prayerfully matches the candidates to a congregation. On Call Day, April 26 this year, the placements are announced. Graduation happens in mid-May, after which the candidates may accept the Call. This year there are only 40 men in the graduating class at St. Louis.

Bill Fuller chaired the Pastoral Assessment Team (Pastor Pohland, James Sanborn, Frank Menzel, Cathey Tucker, Gen Shepherd, Colby and Jennifer Bullock, Cameron and Margie Schneider). District President Rev. Mike Newman that we request a certain candidate from the St. Louis seminary. The seminary sent Revised Profile Sheets for four candidates. The committee interviewed 3 of the 4 candidates and is recommending Joseph Bluege. The Elders also endorse this candidate. Pastor Bluege is currently the online ministry pastor at Salem, Tomball. Bill showed 2 recordings of Pastor Bluege, on introducing the online ministry and the other a "Pastor Walk" on Psalm 23.

A motion was made and seconded to request Joseph Bluege be assigned to Faith. Voting was by written ballot according to the bylaws of Faith Lutheran Church. More than 2/3 (required) of the votes were to request Joseph Bluege be assigned to Faith. There were 98 "yes" votes, 3 "no" votes and 1 abstaining vote. The motion passed.

Sue thanked everyone for their help. The meeting was adjourned at 1:25 p.m. Pastor Pohland closed with prayer.

Respectfully submitted,
Jane Anne Pohl, Recording Secretary

Chairman's Report

One Body with Many Members

¹² For just as the body is one and has many members, and all the members of the body, though many, are one body, so it is with Christ. ¹³ For in one Spirit we were all baptized into one body—Jews or Greeks, slaves^[a] or free—and all were made to drink of one Spirit.

¹⁴ For the body does not consist of one member but of many. ¹⁵ If the foot should say, “Because I am not a hand, I do not belong to the body,” that would not make it any less a part of the body. ¹⁶ And if the ear should say, “Because I am not an eye, I do not belong to the body,” that would not make it any less a part of the body. ¹⁷ If the whole body were an eye, where would be the sense of hearing? If the whole body were an ear, where would be the sense of smell? ¹⁸ But as it is, God arranged the members in the body, each one of them, as he chose. ¹⁹ If all were a single member, where would the body be? ²⁰ As it is, there are many parts,^[b] yet one body.

²¹ The eye cannot say to the hand, “I have no need of you,” nor again the head to the feet, “I have no need of you.” ²² On the contrary, the parts of the body that seem to be weaker are indispensable, ²³ and on those parts of the body that we think less honorable we bestow the greater honor, and our unpresentable parts are treated with greater modesty, ²⁴ which our more presentable parts do not require. But God has so composed the body, giving greater honor to the part that lacked it, ²⁵ that there may be no division in the body, but that the members may have the same care for one another. ²⁶ If one member suffers, all suffer together; if one member is honored, all rejoice together (1 Corinthians 12:12-27 ESV).

This Voters Assembly is unique in that we will be dealing with a number of issues that, when considered individually, seem to appeal to a small and unique subset of our congregation but that, when considered as a whole, affect everyone. Harold Bergh will be presenting a revised columbarium proposal for your approval. While this end-of-life matter may be a distant topic for some, it is of high and immediate importance to others. All expenses will be covered by designated gifts. “...if one member suffers, all suffer together.”

We will be asked by the Board of Human Care to act to sponsor a refugee family from Ukraine. This is not a matter of politics but of simple humanity. The affected family will be strangers in a strange land and will desperately need both financial and moral support. The estimated cost of supporting one family for one year is \$3,000-\$7,000. A designated gift account would be created to fund this ministry. “For in one Spirit we were all baptized into one body—Jews or Greeks, slaves or free.”

Parents state that their primary concern is the safety and security of their Sunday School and preschool children. To improve safety and security, The Preschool and Education Boards would like to partition rooms B-116 and B-120 into four classrooms and a gathering space in order to consolidate all young children in a single, controlled environment. The dollar cost would be borne by a state grant, but the rest of us would need to accommodate ourselves to new meeting locations in the activity center if the proposal is approved. “The eye cannot say to the hand, ‘I have no need of you, nor again, the head to the feet.’”

If authorized by you at this meeting, we have significant funds available to renovate and restore the activity center to a fully functional adult and youth facility. To do so will require trust that the church council and a steering committee appointed by the council for the purpose will ensure that all users and their needs are accommodated.

Of paramount importance to me is that the congregation act as one, *“for the body does not consist of one member but of many”*. The desire for unity is the reason I asked that the motion regarding the columbarium be withdrawn at the Spring 2021 Voters Assembly when it became apparent that there was not unity in the body.

Our constitution and by-laws require a 2/3 majority vote to change them. Likewise, issuing a divine call requires a 2/3 majority vote. I think a 2/3 majority vote is an appropriate standard for any action that will result in significant changes to our facility or our operating practices. Additionally, I have been asked, and readily agreed, that these significant votes be written rather than voice votes. This will provide privacy in the vote and ensure an accurate count. We used this procedure for the Joey Bluege call vote and it worked well. I recommend we do the same at this meeting for the columbarium and Sunday School/Preschool votes.

The matters I have discussed in this report are urgent for some and the outcomes are important to all. I have carefully and prayerfully considered each petition and recommend their approval to you. I ask that you, too, carefully and prayerfully consider them, for, in closing:

“If all were a single member, where would the body be?

As it is, there are many parts, yet one body.”

Pastor's Report

Senior Pastor's Devotional Thought for the Spring 2022 Voters' Assembly of Faith Lutheran Church

Christ is risen! He is risen, indeed! Alleluia!

With this acclamation the Church joyfully proclaims the central truth of the Christian faith. The fact that Jesus rose from the dead three days after He died is the bedrock upon which all biblical doctrine is built. That He promises in grace to share His victory with all who believe is the source of all Christian confidence and peace. If there is no resurrection our faith is a lie and there is for us neither forgiveness of sins nor any hope of everlasting life. But since Jesus has indeed been raised from the dead there is for all who believe in Him such glory in heaven that all sufferings on earth pale in comparison. That doesn't make the troubles of this life any less troublesome, but it does place them within a much larger context. Persecution is time-bound; Paradise is eternal.

In America, the Church is (blessedly!) fairly comfortable. Freedom of religion is enshrined within our laws. Safeguards are in place, protecting us from the kinds of overt persecution faced by Christians in other lands. But even here, in subtle ways Christianity is mocked. This is evident in many areas, such as respect for life and the insistence that all lives matter, from conception through natural death, but it is perhaps nowhere more true than in regard to gender and sexuality. God's good creation of male and female, joined together in the life-long, one-flesh union of husband and wife, is widely disregarded if not wholly disparaged. Whether the world smiles benignly or scoffs derisively it willfully (and hazardously) goes in other directions when the Church speaks approvingly and encouragingly of virginity until marriage, fidelity within marriage, and chastity beyond marriage. Ours is not a Christian culture.

Yet Christ Jesus prohibits His Church from engaging in self-righteous judgmentalism over matters that are profoundly theological and cannot be confined to mere biology and sociology. Those who use God's word as a battering ram against culture without care for lives left bloodied by their assaults are no better than the Pharisees Jesus chastised for their hypocrisy. Bold adherence to Scripture must always be mirrored by prayerful caution when dealing with individual souls in individual situations. The unrepentantly headstrong might be blessed with a stout "Thou shalt not!", but those who are genuinely struggling with issues of gender identity and sexual orientation, who find themselves caught in a deeply personal battle for selfhood need more than a well-intended "go to church" or "read the Bible;" they need someone to come along beside them and walk with them the way that Jesus came alongside two confused and dejected disciples making their way to Emmaus on Easter night. Before revealing Who He was, Jesus asked questions of the two, showing genuine interest in their struggles. He won their confidence through miles of shared conversation, during which He gently opened the Scriptures to them. His patience paid off. The two sped back to Jerusalem, sought the company of disciples, and eagerly shared with them the peace they had received from the unquestionably risen Jesus.

Fearfully barricading ourselves behind locked doors (or locked hearts or locked minds) is not Easter discipleship. The resurrected Lord Jesus did not bestow the Holy Spirit on frightened followers to approve their seclusion but to fortify them to engage the world with saving truth. He promised them His presence wherever they went and assured them that their witness to His resurrection would be blessed by the Holy Spirit. That's still true! The now reigning and soon returning Savior of all

continues to accompany His disciples. His power remains our protection, and His promise remains our strength. It is in the certainty of Easter that we are now eager to walk alongside those whose lives, for whatever reason, are in turmoil. The Church of the eternally alive Lord Jesus remains their best hope for love that neither condones nor condemns but gently befriends them as it gladly proclaims Easter grace to all.

Prayerfully,
Pastor Walt Pohland

DCE Jonathan Loesch's 2022 Spring Ministry Report

CHILDREN'S SUNDAY SCHOOL

- The 3-year-old thru 2nd Grade class meets in room C-101 (Education Wing). The teachers for this quarter are Lisa & Kent Kubie, and Tonya Loesch.
- The 3rd – 5th grade students meet upstairs in room C-205 (Activity Center). The teacher for the month of May will be Ariel Richers.
- We continue to use the *Enduring Faith* curriculum from Concordia Publishing House. This quarter, Unit 8: “Jesus Saves the World.”
- Our goal is to gradually add more classes/teachers for optimal and age-appropriate learning.

ADULT BIBLE CLASSES

Spring Quarter: Sunday mornings, April 3rd – June 26th (five classes from which to choose)

- Review of the Christian Faith/New Member Class – Pastor Pohland
- A Study of Selected Psalms – Dorothy Spencer
- Chosen: A Study of Esther – Patricia Willoughby (Women's Bible/Book Study)
- The Intertestamental Period – Ron Swanson
- Households of Faith (“Parenting Class”) – DCE Jonathan Loesch

Look for info on the summer quarter offering of classes...coming soon!

Midweek mornings – spring quarter:

- Shelly Curren leads the Wednesday morning class.
- Thursday morning Men's Bible Class led by Austin during Lent.
- Grief Support Group, led by Dolores Karkoska, Thursday afternoons.

ROCK HOUSE MINISTRY

The called staff leads a once-a-month (2nd Wednesday) worship & Sunday School experience (we call it “Chapel”) at the Rock House Day-Hab in town. The average attendance hovers around 50+ attendees, not including RH staff. Our next chapel will be Wednesday, May 11th starting at 9:30 AM. Anyone is welcome to come help and worship with us!

OUTREACH KIDS CLUB: “VIP”

- We meet at the Boys & Girls Club of Georgetown for our weekly Bible Kids Club (“VIP”) at the old Picket elementary at 1100 Thousand Oaks Blvd, leading two different age groups from 4:00 – 5:30 PM.
- Austin and I distributed 20 copies of The Jesus Storybook Bible, as well as 20 goodie bags to the kids in VIP during Holy Week and Easter!
- Please let Austin or me know if you, or someone you know, would like to serve in this awesome outreach to children in our community. Adults and high school age youth are encouraged to help!

VACATION BIBLE SCHOOL

- The dates for our family (all-ages) VBS this year are June 13 – 17. (Monday – Friday)
- We will begin with dinners each night at 5:30 PM and classes to follow from 6:30 – 8:30 PM.
- The theme this year is “*God's Wonder Lab: Jesus Does the Impossible.*”
- Mark your calendars to volunteer in one of the many areas! Or, if you prefer, register for the adult class!
- Look for the QR code on the VBS flier, register on our website, or grab a paper copy in the narthex.

- VBS recruitment and training are the keys to a successful, meaningful, and fun VBS!

CHILDREN/FAMILY MINISTRY

- There were over 70 Easter goodie bags distributed to all the children who attended any of the three services on Easter Sunday. We also continued the children's tradition of the Flowering of the Cross on Easter!
- Our bimonthly *Happy Times* and quarterly *My Devotions* devotionals (for use in the home) have been set out on the "Kids Corner" table in the narthex for kids and families to pick-up when they come for worship.
- Bibles and other print resources for children and families are being made available at the church. For those not able to come to church, I deliver or mail to them.

NURSERY CARE

- We continue to offer nursery care for children (infant thru age 3) on Sunday mornings during the worship and Sunday School/Bible class times. Amy Cox, Kassie Perez, and Danielle Peartree are our nursery attendants.
- McCaryn Gaty, Kara Mersiovsky, and Denise Riedel serve as our nursery worker subs for our regular staff.
- Praise God! Our nursery continues to grow!

CRADLE ROLL

- Jennifer Schmidt serves as our new Cradle Roll coordinator for the young families at Faith.
- NOTE: *Cradle Roll is where Christian resource packets and cards are mailed to families who have recently had a child baptized here at Faith.*

CONFIRMATION

Confirmation (testimonies and the rite) is THIS Sunday, May 1st!

(Please see Austin's DCE report about the latest in Confirmation Ministry)

FAITH LUTHERAN PRESCHOOL

- We currently have 52 children enrolled (seven classes) at our preschool this year!
- Registration for the 2022-'23 school year is filling up fast!
- Our director, Sabrina Skelton, is an impactful leader and diligent worker who loves the children, families, and staff at Faith! She is currently working on her CDA (Child Development Associates credential).
- Thank you AGAIN for your prayers and support for Faith Lutheran Preschool!

STAFF LIAISON

I am currently the staff liaison to the Board of Education, the Board of Fellowship, and the Preschool Board.

– Jonathan Loesch, Director of Christian Education (Children & Families)

Austin Angerman, Director of Outreach and Youth Ministries

Staff Report for Voter's Assembly, May 2022

Youth

Update on Specific goals for 2022:

- By way of the LCMS Youth Gathering in Houston, we hope to:
 - Introduce more formal structure to youth leadership on the youth board
Youth Gathering planning meetings have found a 'regular' meeting time: the final Wednesday of each month at 7pm, and are open to both youth and their parents. Meetings are hybrid (both in-person as well as virtually joinable through Zoom) which has led to increased attendance for those who would have a significant commute to attend otherwise.
 - Help the current 8th grade Confirmands transition into high school ministry
Of the 9 students who were Confirmed on May 1st, 6 of them will be attending the Youth Gathering this summer in Houston and have been active in fundraising and planning efforts!
 - Increase youth involvement and visibility within the congregation as a whole by way of fundraising events that offer a service to others
Calendar Sale, Sub Sandwich Sale, and the inaugural Easter Bread Sale have all been a tremendous success. As of the time of this writing, we are over 80% of the way to our fundraising goal!
- Expand the scope of the morning Bible studies over the summer, to include more people and possibly to include breakfast.
There is renewed interest in the return of the summer morning high school Bible study among the youth at Faith Lutheran. We are strongly considering moving the day of the week from Wednesday morning to Friday morning.
- Coordinate youth and community outreach programs to help minister to people in need in our community. In action this looks like:
 - Involving youth with outreach ministries at the Boys and Girls Club
 - Partnering with The Caring Place of Georgetown for youth volunteer opportunities
 - Looking for opportunities to connect with and serve seniors in various assisted living homes in Georgetown*These three opportunities for community engagement all have significant room for improvement. We are hoping to partner with Habitat for Humanity of Georgetown in conjunction with our upcoming Rummage Sale Fundraiser on June 4th.*

An update on Confirmation:

On Sunday, May 1st, 9 students from the 8th grade Confirmation class were Confirmed in the faith, reading their testimonies before the congregation and attending the Rite of Confirmation that afternoon at 2pm. The practice of separating the Rite of Confirmation Service from the usual 11am service began in 2020 as a precautionary measure during the early stages of the Covid pandemic, however, families have given such positive feedback on the change that we have kept it in practice for the time being. Between the 11am service, wherein students read their

testimonies, and the 2pm Rite of Confirmation service, we hosted a lunch in the Activity Center for the Confirmands and their families. Over 100 people attended the luncheon as family members, friends from school, and even coaches from sports teams came out to support specific students being Confirmed.

Below is a list of Confirmands and their selected Confirmation verses:

Confirmand:	Verse:
Witten Barnes	John 15:16
Landyn Bullock	Philippians 4:13
Colt Domel	Revelation 21:4
Emma Jackson	Philippians 3:14
Mackenzie Kesner	Psalms 25:4
Lincoln Kincart	Psalms 28:7
Ella Lischka	Ephesians 2:8-9
Parker Steinly	Joshua 1:9
Michael Vommaro	2 Corinthians 4:16-18

Outreach

A church-sponsored preschool Easter Brunch on Thursday, April 14th in the Activity Center was a huge success, setting a precedent for future preschool events like this where families can come together and interact with one another.

Special thanks to Susan Schmidt and the Helping Hands group for helping to make the event a success

Easter Eggstravaganza on Saturday, April 16th was incredibly well attended. As far as I know, no "official" count was made but there were at least 175 children who attended, my estimate would be 200 children in total, as well as over 100 adults for anywhere between 300 and 400 attendees in total. We had prepared for and anticipated 300, and ran out of just about everything (hot dogs, gift bags, ice cream, etc.)

At a follow-up meeting those involved processed what went well / what needs to change for next year.

Significant takeaways include the success of new advertising channels (flyers distributed by the school district directly to students were a huge draw!) as well as the need for more volunteer help at future community events.

Special thanks to Clara Webb who painted our photo backdrop that was displayed adjacent to the flowered cross at the Easter Eggstravaganza. It was tremendously popular and will return in future years!

VBS is only 20 days away at the time of this voters meeting on May 22nd.

VBS dates are June 13-17, registration link is already up and running on the church website for both children and adult volunteers, contact myself or Jonathan Loesch for more info! Attempting to bring in not only children this year but also adults for an adult class about the intersection of Christianity and

Science led by a series of guest speakers who work in various scientific fields (physics, medicine, microbiology, etc.)

We are in the early stages of planning a Christmas event in December involving various Christmas-light displays in the grass lot behind the church parking lot (colloquially known as the 'back 40'). For more information, or if you would be interested in volunteering at a station serving hot cocoa or cookies, contact myself or Steve Sommo, board of Community Outreach chairman.

I will be teaching a summer quarter Bible study for youth and adults alike, focusing on how God throughout both Testaments of scripture sought out people so that they would know Him. In an informal Bible study, we will look at a different example each week and examine how we can apply the same principles that God models for us in scripture in our day-to-day lives as we seek to "make Christ known".

Music and Parish Administration 2022 Spring Report

Director of Music and Administration Adam Perez's Spring Ministry Report

Administration

Office

- Our wonderful secretarial staff along with myself cleaned out around 51% of the excess data within our current database. Since we are billed per record, the church directly benefits from not having those records.
- Our office staff has begun relying more heavily on our database, ShelbyNext, for our communication, member upkeep and now, organization, in ensuring we are keeping track of our many teams and groups!
- Our admin staff and I are creating a structured plan for improving virtual communication with our congregation, *and with the community around us*. These are new initiatives to pair with our current weekly communications. Part of that plan involves a more up-to-date and easier-to-use website.
- We have begun pouring into our social media more heavily, largely as an outreach tool in association with Austin Angerman's outreach plan. The response has been outstanding, and the amount of people reached in our area via our social media has increased 27.7% over the last quarter, reaching over 7,000 new people. *The Lord is surely moving in and around Faith Lutheran in Georgetown.*
- I continue to work on streamlining technology for Sunday Bible Classes. We now have used gear to stream to our nursery and for B116 and B120. We have had the opportunity to upgrade our Activity Center technology with old Sanctuary gear.

Production

- In the winter of 2021, the church's production team purchased a new digital soundboard system. The board arrived and I installed it earlier this year patching it into our analog system. The digital snakes that improve sound quality are *scheduled to arrive late this summer*.
- We continue to improve physical production equipment for live worship, replacing our primary slides computer from the older, used machine we had as well as replacing a power amp that had burned out.
- Our team of six volunteers scheduled each week to run our livestream are doing amazing work. We have improved or solved some of the camera and IP issues and worked to make our system generally more accessible to run and easier to learn.

Music

- Starting in mid-April, we began offering free music lessons to members *and non-members*. Generally, these students are ages 4-18, and mostly beginner students. Each student is required to play or sing before or during worship once every 3 months.
- Our pool of volunteer instrumentalists continues to grow and serve our congregation in a huge way. This is a mix of both pro and amateur, advanced student and beginner – a beautiful display of the diversity and unity in God’s church!
- The professional musicians we have welcomed into our space for Transfiguration, Good Friday and Easter have all done amazing work to enhance our worship experience. I continue to work with these local pro-musicians on bringing them in not only for worship, but for other concerts and community events.
- We have a wonderful rotation of avid music students and newly graduated musicians, primarily from Concordia University Texas. While they get to serve on the worship team (band, orchestra, etc.), they also get the opportunity to lead and grow more comfortable in their talents that will one day serve other congregations like ours. What a blessing it is to get to mentor and guide these folks as they start their ministry.
- Faith’s choir continues to grow into a vibrant and energetic ministry. The choir has done exceptional work both on their own and when paired with other ensembles.
- We began using live music for community events, namely Faith’s Easter Eggstravaganza, which was incredibly well-received.
- Faith continues to keep good musical relationships with CHS, CTX and other Concordia entities, hosting a CHS choir recording later this month, and a Concordia Irvine Choir Concert this past March.

Concerts

- We were blessed to trial a recital series last year called *Music Makers and Life Changers*, largely at the idea and request of one of our amazing professional volunteers. As the response was overwhelmingly positive, we elected to set three recitals as a new initiative to add to our yearly concerts, the first being May 22nd.
- As the summer nears, I am beginning to plan for our winter “concert season”, and what that might look like in association with our local Concordia’s, their students, and our own musicians.

BOARD OF ELDERS

Purpose/Responsibility/Mission

Elders assist the Pastors in matters pertaining to the spiritual and social welfare needs of the congregation. We assist with worship service including distribution of Holy Communion and preparation of the Communion elements, Baptismal water, etc. Additionally elders watch over the doctrine, life and administration of the Pastoral office and other called workers.

Faith Lutheran Elders

Ken Alford, Mike Best, Colbey Bullock, Ron Jiede, Barry Kinkart, Phil Kinkle, Lee Kunkel, Terry Lester, Jim Mateos, Mike McPherson, Randy Meyers, John Ploetz, James Sanborn, Cameron Schneider, Danny Swafford, Michael Thane, Greg Timoney, and Larry Tredemeyer The Board of Elders currently has six vacancies that were not filled at the end of 2020

Responsibility & Expectations

- Demonstrate in our daily walk our life in Christ
- Be active in worship and bible studies
- Be personally responsible for fulfilling obligations (i.e. contacting Shepherding Group, covering worship assignments)
- Actively participate in Elder meetings
- Maintain confidentiality

What Has Been Done This Year With Pastor Bill Crowe heading God's calling him to another congregation, the Elders have been very busy assisting Pastor, ensuring the services, and Communion flow smoothly. The men on the board have put much effort in ensuring that both members and guest feel welcome. Elders continue to remain in contact with their shepherding groups and are available should a need arise. Elders continue to assist with worship services, funerals and Communion services.

James Sanborn,
Board of Elders Chairman

FAITH LUTHERAN PRESCHOOL

Faith Lutheran Preschool opened for the 2021-22 school year on August 31st with 43 preschool children, 5 teachers, 2 aides, and Director. Classrooms were assigned in both the Education Wing and Activity Center. Currently, we have 51 children ages 18 months-5 years old, 7 teachers, 2 aides, and our Director, Sabrina Skelton. Classes are Tuesday-Friday, 8:30am-2:30pm.

We have registered 40 children so far for 2022-23, and several are Faith Lutheran Church family members. We anticipate several more registrations in the next month and over the summer. We also anticipate needing 7 classrooms again and our goal is to have all classes in one building for continuity and safety.

We have been fortunate to have received two non-taxable Childcare Relief Fund grants this year.

Faith Lutheran Preschool children made table decorations and provided wrapped tableware for the Faith Easter Breakfast this year. The church Eggstravaganza was supported by volunteers from the preschool staff, Director, and Board members at the Scholastic Bookfair, ice cream, face painting, popcorn, and beverages. The preschool also had a table at the Faith Ministry Fair showcasing our preschool and volunteer opportunities. Our supportive parents will again have a Gift Basket Silent Auction for our congregation and preschool families in May. Graduation in the church will take place the last day of school, May 20th.

In an effort to continue our mission-based goal of reaching young children and families, there will be a 6-week Summer Program, God's Backyard Bible Camp teaching kids to serve Jesus, community, neighbors, friends, and family under the sun and stars. Chapel will be once a week during the six weeks. The response from families and community has been exciting!

Our goal is to have all of our children and staff in one building for continuity and safety. We are grateful for all the prayers and support we have received, and we look forward to continuing our mission of providing high quality, Christ-centered teaching to our young children.

Faith Lutheran Preschool Board

Jane Hutson

Lisa Kubie

Paula Holland Price

Linda Robinson

Ali Saladino, Parent Representative

Sabrina Skelton, Director

Jonathan Loesch, DCE Liaison

Kathy Nelson, Chair

BOARD OF ASSIMILATION

Members

Gen Shepherd, Mary Fuller, Dorothy Bowers, Gil Bowers, Ann Harrell, Holly Decherd, Diana Tchida, John Cotner

Meetings

Meetings are held as needed for purposes of planning activities and events such as the New Member Luncheon and Lenten taco salad meal that BOA hosted in March for 57 attendees, and for projects like the *Opportunities to Serve Handbook*, *Things to Do at Faith Lutheran Church Handbook*, and *New Member Photo Directory*. Members share in the different associated jobs.

New Member Activities

New Member Welcome luncheons are held on Reception of Members Sunday approximately each quarter. The luncheon is a Jason's Deli box lunch. Orders are taken at the New Member Sunday School class two weeks prior to the luncheon. Transfer Members are included in this luncheon. There was one in December where 20 New Members were welcomed and another in April where 20 were welcomed. Several New Members were unable to attend.

A photo is taken, and Bio information collected on each New Member family. This is compiled into a *New Member Photo Directory* after each class. Transfer Members are included in this Directory. These Directories are available in the Narthex for church members to pick up for 4-6 weeks. A copy of each is kept in the Welcome Center as a reference. These photos are also posted on the New Member bulletin board.

Opportunities to Serve information is collected on each New Member and interests are disseminated to the appropriate board/ministry contact person.

New Member families are assigned to a BOA member for contact with a welcome card and follow up email. The purpose being to assist them in assimilating into the family of Faith.

Opportunities to Serve Handbook

The *Faith Opportunities to Serve Handbook* has been completed and contains the purpose, ways to serve, and contact person for each area of service. They were distributed to BOA members, staff, Church Council, at the New Member Luncheon, were available in the Narthex on Easter, at the Ministries Fair on the 24 April and will always be available for pick-up in the Narthex. It includes 50 areas of service where one may participate at Faith. The previous Ministries Handbook is now a part of this handbook.

A condensed version to the Opportunities to Serve Handbook called *Things to Do at Faith Lutheran Church* was developed to be a part of the Visitor Welcome Bag and to be used for outreach.

Respectfully Submitted,

Mary Fuller - Co-Chairman

Gen Shepherd - Co-Chairman

BOARD OF HUMAN CARE

The goals of the Board of Human Care are: 1) to provide advocacy in each ministry; 2) to assist in making ministries known to the congregation; 3) to help coordinate publicizing of ministries; 4) to seek and evaluate new ministries as needs are identified in the congregation and community; 5) to encourage measurable goals within each ministry to provide direction, purpose and promote enthusiasm and; 6) to ensure continuity of ministries in the church and show love to those in need as well as to nurture relationships between the servants and those being served.

The members of Faith and its Human Care Ministries continue to carry on the Lord's work, serving and touching lives within our congregation, our community, our region, state, nation and into the world. On Sunday, April 24th, we held a Ministry Fair in the Narthex before and after each service in an effort to showcase the ministries within Human Care. We had about 13 different ministries represented. Following is a year-to-date update from each ministry.

Bags to Mats

Members

Bags to Mats membership is currently 16. Several are not church members. We generally have from 5-7 members at meetings and not always the same people, several work from home only and several are inactive. We are pleased to be adding new members each month and invite anyone who would like to serve the homeless and recycle with a purpose to join us.

Meetings

Meetings take place on the 1st and 3rd Friday of each month in the library. We meet once a month from June to August on the 3rd Friday. You do not have to attend meetings to be a part of Bags to Mats, but the meetings provide instruction, drop off and pick up of materials and most importantly, fellowship.

Mat Distribution

Bags to Mats works with LINC Austin to distribute mats to those who most need them. We have distributed 28 mats since the last Voters Assembly Meeting in November: 15 in December and 13 in March. A total of 53 mats have been given to LINC Austin since November 2020. To quote LINC Austin, "these mats are like gold to those who receive them".

Serving the Bags to Mats Ministry

We would like to thank everyone who donates clean grocery bags to our ministry and those who take home cut bags and return plastic yarn (plarn) to our cart in the Narthex. We could not do this without you. And of course, thank you to the members and non-members who fold, cut, make plarn and crochet mats.

Respectfully Submitted
Mary Fuller

Caring Place

Caring Place distributes food Tuesdays and Thursdays from 8:30 a.m. - 10:30 a.m. in the 2000 Railroad drive through. Anyone in the area is eligible for this food program.

Faith in Action Georgetown

Faith in Action Georgetown (FIAG) provides services at no charge to non-driving seniors age 65+ who cannot afford a vehicle and related upkeep, and who live in their own homes in Georgetown or its ETJ. FIAG's mission is to help seniors maintain their independence and quality of life by providing transportation and other services. Faith in Action was formed by the cooperative efforts of area churches. It continues to draw much of its strength from its close association with these congregations.

FIAG provides many services to Georgetown seniors:

- Transportation: Volunteers provide rides for clients to a variety of destinations.
- Buddy Program: Volunteers check on seniors regularly to ensure their needs are being met.
- Van Program: FIAG's Go-Van-Go is a fun way for seniors to go grocery shopping.
- Medical Equipment Closet: FIAG provides wheel chairs, etc. free of charge.
- Information and Referral: FIAG provides needed information to seniors and their families regarding aging resources and services.

FIAG looks forward to a continued partnership with Faith Lutheran's support in promoting volunteer opportunities, awareness of services and financial contributions. Faith Lutheran's quarterly donations of \$200 are gratefully appreciated as they allow FIAG to continue providing transportation free of charge to Georgetown's senior adult population.

FIAG's Executive Director is Vickie Orcutt (512) 827-2644

Grief Support

As of March 3, 2022, the Grief Support Group changed from Sundays to meeting on Thursdays at 2:00 p.m. in the Family Room. This change enables participants to attend Sunday Bible classes. It also enables participants to be on duty for choir, greeter, elder, etc. without having to leave early from the group. Several participants are not members of any church. This group has proven to be a wonderful evangelism opportunity, as well as support for grieving people. Please let people know that the group is available. We welcome those who have recently lost a loved one from this life and anyone who stills needs to process longer term grief. Also, pray for the group as a whole and the individual participants.

Dolores Karkoska, Facilitator

Habitat for Humanity

A new project "Shepard's Village" coming later this year, a 12-family multi-unit project. More on that soon, as they're working on press-release type brochures and information.

Lee Kunkel

Heartfelt Stitchers

The Heartfelt Stitchers, continue to amaze with their heartfelt contributions and hard work. Our group has given comfort to hundreds of individuals this year. So far, we have given donations to Children's Advocacy, Estella Nursing Home, Dell NICU, Baptisms at Faith, and our own Faith Lutheran home bound. We are currently making items for the Veterans and Wilco Victim's Assistance Program. Our Stitchers would like to say, "Thank You" to Faith Lutheran, for all the gifts of yarn and monetary donations. These gifts help reach out to many who are in need of comfort.

Submitted by: Sherry Craig and Sherry Richter, Co-chairs

Hospital Chaplains

No activity.

Lutheran Braille Workers

Lutheran Braille Workers are volunteers throughout the USA. There are amazing letters of thanksgiving of blind people who rejoice when they can get God's Word in their language. In the USA a full Lutheran Braille Bible would cost over \$1,320 and many could never afford to purchase God's Word or devotional writings or a Hymnal.

The Devotional Booklets are in ENGLISH BRAILLE but most of the I & II Corinthians Booklets are in SWAHILI sent to East Africa as the Trade Language of East Africa is Swahili.

Faith has a faithful group of volunteers who meet MONTHLY on the SECOND MONDAY of each month from 12:00 noon to 2 PM.

Lutherans for Life

On January 23rd, Sanctity of Human Life Sunday, I presented a brief Temple Talk on the subject of "God Values All Life". I also had a display table set up in the narthex with brochures and booklets from Lutherans for Life, along with a set of realistic fetal models at different stages of development. Baskets for donations were placed in the narthex and a total of \$1,038 was raised which was evenly distributed between Lutherans for Life and the Pregnancy Help Center of Williamson County. In addition, as the Church Liaison for the Pregnancy Help Center of Williamson County, I promoted their annual BBQ fundraiser at Faith. I also supplied them with baby blankets and clothing made by women of the church.

Lutheran World Relief / Quilt Ministry

LWR Quilters meet each Tuesday of the month. In addition to quilting at the church, many of the ladies quilt at home to increase the number of quilts we produce in a year. Currently we have completed 58 quilts as of April 19, 2022. We shipped 117 quilts this past year. The Fall Quilt/Craft sale will be October 23, 2022. The sale supports batting, quilting thread, sewing notions, shipping cost etc. In the past two months Grace and Gwen have joined our group.

Submitted by: Barbara Bielss and Sherry Richter

Meals on Wheels

Faith's Meals on Wheels team is made up of 40 volunteers; however, at any given time only about 25 are available for service because of travel or illness. More active volunteers are needed at this time, and it is hoped the Ministry Fair on April 24 might lead to identification of more volunteers. There are nine churches in Georgetown that carry out the MOW Georgetown program. Our team will deliver meals for one week in April, June, August, and November. There are now fourteen delivery routes in Georgetown. Masks, as part of Covid 19 protocols, are no longer required while in the MOW Center and when delivering meals to the clients.

The peanut and butter collection at Faith in March was a great success. Peanut butter and jelly are distributed to clients once each month.

HEB Bread and Bakery Items (day-old) are donated to Meals on Wheels on Saturdays and Sundays.

Meals on Wheels clients look forward to the extra bread and sweets, which are offered on Monday.

Each church is responsible for the pick-up of these items on the Saturday and Sunday (6-8 am) prior to its delivery week. Currently, Billie and Dennis Dalrymple are fulfilling this function.

Billie Dalrymple

512-633-7677

Billie.dalrymple@gmail.com

Military Care Support

We have 5 active members, meeting monthly in the Library. Year to date we have shipped 900 paracords. 300 paracords will be shipped on Memorial Day and 300 for the 4th of July (being created now). Checking account balance as of March 31, 2022 is \$351.72. Without additional funding, one additional Amazon order can be processed (three, 1000 foot rolls each at approximately \$65 each + Tax). Postage is approximate \$25.00 per carton. While we have a small group of dedicated workers, we are able to continuously create additional cords for our troops.

Neil Christiansen

512-948-6841

New Life Treatment Center / Upbring

The Upbring Golf Tournament benefiting the children in our care will be held on Monday, June 27, 2022. The Golf Club at Star Ranch will host the tournament which will feature a 4-man scramble format. Registration begins at 7:00 a.m. with a tee time of 8:00 a.m. We hope to have a large number of Golfers this time around.

Bill Jones.

Prayer Ministries

1. **Prayer Warriors** meet in person weekly at 9am on Mondays in the church library. We have seven prayer warriors and usually 4-5 who attend and pray. I am so thankful for their faithful pray-ers.
2. Our **Mission Prayer Team** prays for monthly mission prayers by e-mail. Mission Prayer requests are included. Please pray.

3. Good Friday Prayer Vigil took place on Friday, April 15th from 7:00 AM to 7:00 PM.
Thanks to those who prayed that day.

The family at Faith spent the day in prayer, petition, and thanksgiving, as we remembered our Lord's journey to the cross. Good Friday Prayer Vigil guides were available.

Prayer Quilts

Since my last report in January, we have given six (6) Prayer Quilts. Also, one (1) new Quilt Maker has joined our little group. Since the pandemic several Monitors have not returned. Although we gained six (6) new Monitors during the last report, covering the Prayer Quilts during the early service continues to be a problem. I plan to begin a more aggressive recruitment after the "Fair".

Stephen Ministry

We continue to offer the book set "Journeying through Grief" by Dr. Kenneth Haugk to members of the congregation who have lost a loved one. Many people have told us that the books are comforting and timely.

At this time, two Gentlemen from our congregation are in training to become Stephen Ministers. They will finish their 50-hour training in mid-May 2022 and join the rest of the Stephen Ministry Team in June. We will have 5 active Stephen Ministers.

The team has taken a few months' hiatus this year. We are hoping to resume our monthly meetings in June. Please continue to pray for this ministry and for anyone who may need a Stephen Minister. We are ready to come alongside anyone who is hurting and help them carry their burdens.

If you have questions or an interest in Stephen Ministry, please do not hesitate to call for additional information.

Respectfully submitted by Peggy Hill, Stephen Leader, Faith Lutheran Church.

Sunshine Friends from Faith

The Sunshine Friends Card Ministry is blessed to continue this ministry. Faith's homebound members are so appreciative that Faith Lutheran remembers them with a monthly card and prayers.

Eight Sunshine Friends have a designated list of Faith's homebound members they remember each month by sending out a monthly card. Friendships have been formed over receiving a simple card full of God's love and encouragement. Several of our homebound members (and their family members) have reached out to us, Pastor Selle, and the church office to let us know how much they enjoy and look forward to receiving their monthly card from Faith Lutheran! They know this congregation loves them! Our ministry continues to bless not only our Homebound friends but each one of us. We continue to give thanks to God that we can continue this ministry. We are thinking of ways to expand this ministry to show more of God's love to His beloved children.

- Respectfully submitted, Peggy Hill, Chairperson

BOARD OF CHRISTIAN EDUCATION

Overview:

2022 is shaping up to be a wonderful year. Sunday school is off to a great start with multiple adult classes being offered, children returning to class, and most places have reopened and are starting to allow visitors/volunteers again. The Education Committee is starting to regroup and is excited about the positive things that will be happening in 2022. Jonathan and Austin are doing a great job with curriculum and staffing all of the Sunday school classes. We are excited that we were able to host the Easter Eggstravaganza this year and are looking forward to more community events throughout the year. If you would like to volunteer to teach a class or have an idea for a class, please let us know. The committee is currently focusing on the list below.

1. HS/MS Sunday School
2. Children's Sunday School
3. Adult Bible Class
4. Senior Adult Education
5. Rockhouse
6. Cradle Roll
7. Nursery
8. Confirmation
9. Boys and Girls Club

The goal for our board is to continue to bring more families and youth back into the church for Sunday School, youth gatherings, and family gatherings. If you have any thoughts or ideas in regards to Christian Education, please contact Jennifer Bullock at jennifer.bullock1122@gmail.com . God's wonderful blessings to you all!

GIFTS & ENDOWMENTS COMMITTEE MAY 2022 REPORT

The Gift and Endowments Committee has oversight responsibility for two Endowment funds and the Memorial and Special Gifts activity. The Lutheran Foundation of Texas has a professional administrative staff and a Board of Investment Directors, determines investment pools, manages the endowment funds, recommends appropriate investment allocations, and provides quarterly reports to the Gifts and Endowments Committee.

Financial Balances as of March 31, 2022

Church Worker Scholarship Endowment Fund - \$123,419.74

One of the blessings that Faith has received is that some of our members have gone on to be church workers. They have completed university coursework, field training, and now serve in various church positions around the country.

The university coursework is typically completed at a Concordia University campus. As many of you know, a university education is not inexpensive and a private university is even less so. This Church Workers Scholarship and Endowment Fund provides scholarships to those who are earning a degree and intend to pursue a career in church work. This fund has helped make it possible for almost twenty students to continue their education and become church workers. There have been situations when a scholarship from this fund has been the difference between continuing an education or suspending study.

One distribution was made for the current school year.

For additional information on Faith's Endowment and Gift Fund opportunities, please refer to the Gift and Endowment Committee brochure located in the information racks in the Worship Center.

Restricted Private Member Memorial Endowment Fund - \$8,426.25

This Restricted Private Member Memorial Endowment Fund was established by the estate of a former member of Faith. Distributions from this fund are limited to students preparing for the pastoral ministry of the LCMS. Scholarship distributions are approved by the Church Council and executed by LFOT.

Two distributions were made for the current school year.

Questions concerning the Endowment or Gift Funds may be directed to David Wright, Chairman of the Gifts and Endowment Committee or to any of the committee members.

Pastor Walt Pohland	Larry Bielss	Danny Swafford
DCE Jonathan Loesch	Becky Pohland	David Wright
Ron Jiede	Kathy Nelson	Dennis Hill

INFORMATION PERTAINING TO SPONSORING A UKRAINIAN REFUGEE FAMILY

Our faith calls us to welcome the stranger. Co-sponsorship is a direct response to neighbors seeking concrete and transformative ways to welcome refugees and migrants through love and service.

Co-sponsorship community groups must be represented by an established community, such as a congregation. How can our congregation co-sponsor a Ukrainian refugee family? Co-sponsor teams play a critical role in helping refugees thrive in their new home. Our friendship and financial support can ensure a warm welcome and a strong start to their life in our community.

Co-sponsor teams are made up of 5 to 10 people from our Faith family. This team will work with staff (case managers) from the local resettlement agency to help the family navigate opportunities available to them and offering relational support to extend care beyond what they would otherwise receive. We will support case managers who take point on official paperwork, schedule initial medical appointments, and enroll refugees in public benefits. We are to provide financial support and work in partnership with the local resettlement agency and the family to decide how funds will be spent to best support the needs of the family. Refugee family size and history can affect housing needs, medical treatments, and special provisions such as cribs or car seats as well as miscellaneous costs.

Co-sponsorship requires commitment! We must commit to one year of walking alongside a refugee family. We must sign a written commitment with the local resettlement agency to provide friendship, encouragement, and support. This agreement varies by local resettlement sites; however, it generally outlines expectations of what activities volunteers will be doing to support the family versus what the resettlement agency is responsible for and the time commitment expected. We must raise between \$3,000 and \$7,000 to help meet the family's needs. Where does the money go? Funds raised is supplemental to funds given by the government. Finances are handled collaboratively between the co-sponsor group, local resettlement agency and the family with the goal of meeting their most pressing needs. This often includes rent, healthcare, transportation and school supplies.

According to the Refugee Arrival Data from the government, as of March 2022, 706 families from Ukraine have resettled in the United States. Of that number, Texas has had only 3 families to relocate here and we have the lowest number of all the states that have resettled Ukrainians. We can do better!

The Board of Human Care is asking the voters of Faith Lutheran Church to approve the Co-Sponsorship of a Ukrainian Family with their time, talents and stewardship.

INFORMATION PERTAINING TO THE COLUMBARIUM

A RESTING PLACE FOR THE SAINTS

Our Christian faith teaches that the beginning and ending of our physical and our eternal spiritual life rests with God. Faith Lutheran Church can honor life's passing in the form of a Columbarium which will serve as a final resting place for the cremated remains of members and loved ones.

What is a Columbarium?

The word Columbarium comes from the Latin word "columbary" which is a structure for the nesting of doves – the dove being the symbol of God's spirit and peace. A Columbarium is made up of many recessed niches (sealed compartments) that hold cremated remains which are housed in urns.

Is it Okay for Christians to be cremated?

Yes, we believe that both burial and cremation are dignified ways to exhibit proper respect for the dead.

While burial was common practice for early Christians, the Bible nowhere commands burial as the only method of placing earthly remains in God's care.

We believe cremation will not interfere with God's ability to resurrect the body. Bodies that have already turned to dust are in the same state as cremated bodies.

Cremation is a process used to reduce the body to its basic components, idealized as "ashes to ashes, dust to dust."

Cremation is essentially a hastening of the natural process that occurs following death. This ancient practice has relevance today with land surrounding churches less readily available for in-ground burial. The number of people choosing cremation has steadily increased since being brought to the United States in 1874 and stands at more than 34% of all interments in the U.S. Cremation and placement of the ashes on church grounds makes it possible to continue the tradition of granting a place for God's children to "dwell in the house of the Lord forever."

How would such a Columbarium be paid for and maintained?

There would be no cost to the congregation. An endowment fund would be set-up, funded by designated funds which could not be used for any other purpose. Additional funds would be added from the sale of the niches.

Have other churches in this area created Columbaria?

Yes, Christ Lutheran, San Gabriel Presbyterian, 1st United Methodist, and Grace Episcopal Church in Georgetown, and Zion Lutheran in Walburg have established columbaria on their church grounds.

A Columbarium ministry revives the age-old tradition of the church to serve its members from baptism to death. For hundreds of years, Christians have brought their loved ones to the church to be buried either in the church building or in an adjoining churchyard cemetery. Such action gives testimony to our faith in a God who created us and loves us and to whom each of us returns at death. It also serves as an example to those living of the witness of the saints who have preceded them.

RENDERINGS OF A POSSIBLE LOCATION



INFORMATION PERTAINING TO MODIFICATIONS TO THE EDUCATION WING

Questions and Answers About the Proposed Modifications

Q. What exactly is the proposed plan?

- A. The plan would be to move the existing Sunday School and preschool classes from the Activity Center and join them to new and existing Sunday School and preschool classrooms in the Education Wing. The classes and meeting rooms in the Education Wing for adults could then move to new and existing rooms in the Activity Center.

Q. Which classrooms could be affected?

- A. Both B-116 and B-120 are proposed to have walls added to allow for these new Sunday School and preschool classes

Q. Where could Sunday morning adult Bible classes be held?

- A. The choir room should still be available, as well as the library, sanctuary, family room, and other classrooms upstairs and downstairs in the Activity Center.

Q. What are the reasons for adding walls and renovating rooms in the Education Wing?

- A. There are several reasons for the change:
1. To provide the safest and most secure environment for Sunday School and nursery-age children on Sunday mornings, as well as preschool children during the weekdays.
 2. To prioritize young children and families in our church and preschool and upgrade these classrooms for optimal growth and learning in Christian education.
 3. The much nicer classrooms would have an outreach appeal for new families moving to our community and visiting our church.
 4. To grow Faith Lutheran Preschool to upwards of 70+ kids over the next few years.
 5. The FLP director's office, as well as the staff workroom, could also move from the Activity Center to the education wing, optimizing management and oversight of staff, and to make the staff workroom more accessible to teachers and staff.

Q. Is there a proposed timeline as to when these renovations could take place?

- A. The proposed plan for the Education Wing, approved by the Church Council on June 22, 2021, is projected to happen pending congregational approval (May 22 Voter's meeting), and if approved, construction could begin after the FLP school year is over (May 20), and possibly be finished by the start of VBS (June 13), or sometime during the summer months. The proposed plan for the Activity Center is more involved and could take more time to develop. There is not yet a timeline for the start of this proposed project, however, if the congregation gives us the "go ahead," a timeline would be established, and a committee would be formed to begin the renovations.

Q. Who might pay the expense for these proposed renovations?

- A. The three new framed construction walls could be paid for by Faith Lutheran Preschool, and the renovation project in the Activity Center could be paid for by Faith Lutheran Church.

Q. Is there an estimated cost that has been determined for the Education Wing project?

- A. Estimates (two bids so far), range from \$8,000 to \$15,000.

Q. Is there an estimated cost that has been determined for the Activity Center project?

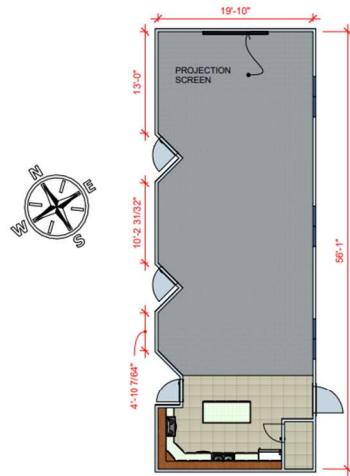
- A. As of this date, we do not yet have bids for this project.

Q. If passed at the May voters' meeting, who might take responsibility for these proposed projects?

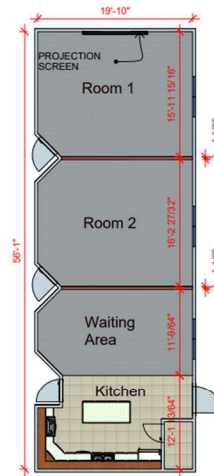
- A. The Board of Trustees, in conjunction with the Boards of Christian Education and Preschool, could oversee the projects and manage it from start to finish. At the proper time, a committee could also be appointed to manage the renovation in the Activity Center.

Education Wing: Room B-116

Existing Floor Plan



Proposed New Floor Plan



Note: Add two new framed construction walls to divide the space into two classrooms + Waiting Area / Kitchen

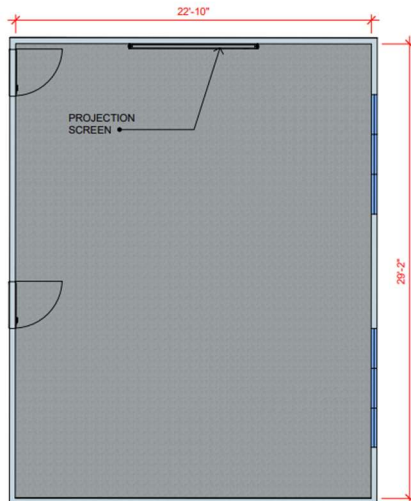
SCALE: 1" = 10' (1:120)

CLIENT: Lutheran Church
4010 Williams Dr, Georgetown, TX 78628
ISSUE: 4-16-2022
4-16-2022
MM.DD.YY
PROJECT: Education Wing
& B116 / B120
Remodel
DESCRIPTION: Education Wing
& B116 Floorplan
Old vs New

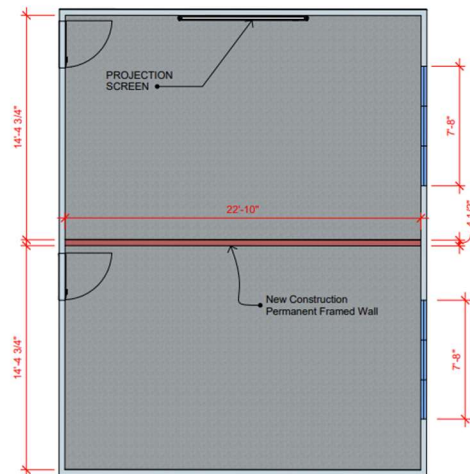
a
03

Education Wing: Room B-120

Existing Floor Plan



Proposed New Floor Plan



Note: New framed wall in center to create two equally divided rooms

SCALE: 3/16" = 1'-0" (1:64)

CLIENT: Lutheran Church
4010 Williams Dr, Georgetown, TX 78628
ISSUE: 4-16-2022
4-16-2022
MM.DD.YY
PROJECT: Education Wing
& B116 / B120
Remodel
DESCRIPTION: Education Wing
& B116 Floorplan
Old vs New

a
04

FAITH LUTHERAN CHURCH

Balance Sheet

As of March 31, 2022

	<u>Total</u>
ASSETS	
Current Assets	
Bank Accounts	
1010 First Texas New Checking	192,503.77
1030 Texas District CEF Savings	788,126.83
1040 Texas District CEF - Mortgage	179,334.49
1050 Texas District CEF-Called Staff	23,960.87
1060 TX District CEF-Mission Plant #2	43,990.59
Total Bank Accounts	<u>\$ 1,227,916.55</u>
Total Current Assets	<u>\$ 1,227,916.55</u>
Fixed Assets	
1500 Buildings - FIF Expansion	5,255,292.32
1510 Buildings - Prior 2009	1,986,853.42
1515 Buildings - Post 2009	35,616.16
1530 Furn,Altar Furnish,Instruments	218,618.97
1540 Land (10 acres Cost)	900,954.63
Total Fixed Assets	<u>\$ 8,397,335.50</u>
Other Assets	
1700 Funds held in trust by LFOT	
1701 Private Member Memorial Fund	7,782.66
1702 Prof Church Worker Scholar Fund	97,537.78
Total 1700 Funds held in trust by LFOT	<u>\$ 105,320.44</u>
1800 Other Long-Term Assets	0.00
Total Other Assets	<u>\$ 105,320.44</u>
TOTAL ASSETS	<u>\$ 9,730,572.49</u>
LIABILITIES AND EQUITY	
Liabilities	
Current Liabilities	
Other Current Liabilities	
2400 Payroll Liabilities	0.00
Federal Taxes (941/944)	1,601.10
Group Term Life Ins	2.13
Group-Term Life	18,187.26
Life Ins Premium	7.26
Vitality Wellness Deduction	2,133.05
Total 2400 Payroll Liabilities	<u>\$ 21,930.80</u>
2500 Short-Term Liabilities - other	
2520 New Mission #2	16,856.86
Total 2500 Short-Term Liabilities - other	<u>\$ 16,856.86</u>
Direct Deposit Payable	0.00
Total Other Current Liabilities	<u>\$ 38,787.66</u>

Total Current Liabilities	\$ 38,787.66
Long-Term Liabilities	
2600 TX District CEF (Mortg 9-2000)	495,028.18
2601 Principal	-132,650.84
2602 Additional Principal	-362,377.34
Total 2600 TX District CEF (Mortg 9-2000)	\$ 0.00
2700 TX District CEF (Mortg 12-2009)	3,708,477.96
2701 Principal	-1,107,854.81
2702 Additional Principal	-1,725,893.04
Total 2700 TX District CEF (Mortg 12-2009)	\$ 874,730.11
Total Long-Term Liabilities	\$ 874,730.11
Total Liabilities	\$ 913,517.77
Equity	
3000 Net Income	-1,786.00
3100 Temporary Restricted Net Assets	
3101 Altar Guild	256.00
3102 Adult Education	4,907.68
3103 Bereavement Committee	481.31
3104 Bread Of Life	7,824.45
3105 Senior Ministry	6,475.00
3106 Live Streaming Balance	1,148.39
3107 Music Fund	8,832.43
3108 Vacation Bible School	1,981.06
3109 Bell Choir	4,745.84
3110 Debt Retirement	686,584.18
3111 Hail Damage	24,841.91
3115 Lutheran Witness	612.75
3116 Lutherans For Life	50.00
3119 Pastor's Discretionary Fund	12,381.21
3120 Always Sharing God's Gifts	177,406.83
3121 By Faith	76,090.00
3123 Growing Abundantly, Giving Abundantly	541,851.99
3125 Rent Income	2,634.50
3126 Stephen Ministry	112.83
3129 Computer & Software	149.96
3131 Lent/Advent Meals	386.53
3132 Footsteps of Faith	640.00
3133 Children's Ministry Events	543.00
3134 Youth Missions Restricted	5,000.00
3135 Youth	5,435.88
3136 Chrismons Balance	1,767.87
3140 Eternal Light (New Sanctuary)	15,416.89
3145 Habitat For Humanity	5.00
3146 Sign Fund	10,500.00
3148 Church Plant-Budget	11,932.31
3149 Church Plant New	56,287.52
3150 Staff Gift Fund	3,200.25

3155 Orton Living Trust	30,165.52
3162 Mission Trips	2,078.00
3163 Ministry Initiatives	500.00
3164 Called worker fund	13,469.22
3165 Liturgical Paraments	19,345.51
3166 Stained Glass Windows	1,687.42
3167 Portable Risers	274.24
Total 3100 Temporary Restricted Net Assets	\$ 1,738,003.48
3200 Permanently Restrict Net Assets	0.00
3201 Private Member Memorial Fund	7,782.66
3202 Prof Church Worker Scholar Fund	98,057.78
Total 3200 Permanently Restrict Net Assets	\$ 105,840.44
3500 Unrestrict Net Asset (ret earn)	6,889,645.18
Net Income	85,351.62
Total Equity	\$ 8,817,054.72
TOTAL LIABILITIES AND EQUITY	\$ 9,730,572.49

Thursday, May 12, 2022 08:37:01 AM GMT-7 - Cash Basis

FAITH LUTHERAN CHURCH
Profit and Loss
January - March, 2022

	<u>Total</u>
Income	
4000 Offering	
4010 Plate	3,292.39
4020 Sunday School	
4021 Sunday School Missions	758.00
Total 4020 Sunday School	\$ 758.00
4030 Offering Envelopes	366,296.54
Total 4000 Offering	\$ 370,346.93
4050 Designated Gifts	
4052 Other Designated Gifts	150.00
4053 On-line Processing Fee	725.30
Total 4050 Designated Gifts	\$ 875.30
4700 Misc. Income	
4701 Interest Income-Checking/Saving	
4701-01 First Texas Bank	9.74
4701-04 Texas Dist CEF Savings	1,518.19
4701-05 Tx Dist CEF Mortgage Acct	423.64
4701-06 TX Dist CEF-Prof. Dev.	58.98
4701-07 TX Dist CEF-Mission Plant #2	108.29
Total 4701 Interest Income-Checking/Saving	\$ 2,118.84
Total 4700 Misc. Income	\$ 2,118.84
Total Income	\$ 373,341.07
Gross Profit	\$ 373,341.07
Expenses	
5100 Outreach	
5180 Texas / Synod	33,000.00
5181 Concordia	4,625.01
5182 Caring Place	1,562.49
5183 Concordia High School	1,562.49
5186 Faith Lutheran Preschool	2,000.00
Total 5100 Outreach	\$ 42,749.99
5200 Pastoral	
5219 Guest Pastor	300.00
5220 Organizational Membership	100.00
Total 5200 Pastoral	\$ 400.00
5300 Worship	33.98
5301 Organist	1,400.00
5302 Choir Director	200.00
5303 Nursery Attendants	1,320.02
5304 Nursery Supplies	43.32
5321 Altar Supplies	692.21

5324 Choir Music	209.34
5350 Instrumental Musicians	1,390.00
5390 Licensing	15.99
Total 5300 Worship	\$ 5,304.86
5400 Community Outreach	
5425 Publicity	1,071.25
5430 Community Events	2,387.98
5456 Easter Pageant	50.00
Total 5400 Community Outreach	\$ 3,509.23
5600 Education	
5640 Sunday School	186.45
5641 Vacation Bible School	237.53
5642 Adult Bible Study	247.41
5646 Special Events	251.26
5650 Family Ministry	451.24
5660 Kids Clubs	20.99
5690 Workshops/Conferences	476.90
5691 Tract Racks	105.14
Total 5600 Education	\$ 1,976.92
5700 Youth	
5710 Junior High Youth	29.91
5711 High School Youth	534.50
Total 5700 Youth	\$ 564.41
5800 Human Care	
5860 Habitat For Humanity	156.25
5865 Meals On Wheels	200.00
5866 Upbring	125.00
5870 Lutherans for Life	62.50
5877 Sunshine Team	601.45
5891 Faith In Action - Georgetown	200.00
5895 Pregnancy Help Center	62.50
Total 5800 Human Care	\$ 1,407.70
5900 Congregation Support	
5945 Portals Of Prayer	997.75
5995 New Member Materials	522.87
Total 5900 Congregation Support	\$ 1,520.62
6000 Business Services/Adm.	
6010 Property/Liability Insurance	7,278.25
6015 Workers Compensation Insurance	520.80
6020 Office Supplies	1,135.38
6025 Accounting Services	5,245.00
6030 Postage	777.69
Total 6000 Business Services/Adm.	\$ 14,957.12
6200 Technology & Media	
6202 Computer Repairs and Maint.	80.00
6203 Computer Software Contracts/Tra	4,379.95
6205 Vanco Host Fee	60.00

6210 Networking, DSL	666.27
6240 Audio/Video Equipment	80.09
6241 Sound Technicians	1,962.50
6250 Printer/Copier Contracts	4,096.76
Total 6200 Technology & Media	\$ 11,325.57
6300 Property	
6301 Facilities Management	21,556.74
6320 Supplies	1,418.00
6372 Utilities	18,544.25
6374 Maintenance & Repair	315.45
6390 Maintenance Contracts	2,924.56
Total 6300 Property	\$ 44,759.00
6800 Bank Expenses	55.93
6812 Mortgage Interest Paid	8,734.06
6813 Vanco Processing Fees	1,907.10
6820 Safe Deposit Box	20.00
Total 6800 Bank Expenses	\$ 10,717.09
7000 Parish Ministry & Fellowship	
7010 Coffee/Condiments	458.75
7030 Parish Min & Fellowship (Othe)	254.70
Total 7000 Parish Ministry & Fellowship	\$ 713.45
8000 Employee Expenses	124.84
8010 Payroll Expense	92,785.03
8020 Employee Benefits	26,579.05
8025 Health Reimbursement	207.01
8030 Auto Allowance	1,599.96
8050 Housing Allowance	26,787.60
Total 8000 Employee Expenses	\$ 148,083.49
Total Expenses	\$ 287,989.45
Net Operating Income	\$ 85,351.62
Net Income	\$ 85,351.62

Thursday, May 12, 2022 08:41:59 AM GMT-7 - Cash Basis

FAITH LUTHERAN CHURCH
Budget vs. Actuals: 2022 Budget - FY22 P&L
January - December 2022

	Apr 2022				Annual Total			
	Actual	Budget	over Budget	% of Budget	Actual	Budget	over Budget	% of Budget
Income								
4000 Offering			0.00		0.00	0.00	0.00	
4010 Plate	2,041.67	833.33	1,208.34	245.00%	5,334.06	10,000.00	-4,665.94	53.34%
4020 Sunday School			0.00		0.00	0.00	0.00	
4021 Sunday School Missions	-924.00		-924.00		-166.00	0.00	-166.00	
Total 4020 Sunday School	-\$ 924.00	\$ 0.00	-\$ 924.00		-\$ 166.00	\$ 0.00	-\$ 166.00	
4030 Offering Envelopes	127,222.27	115,500.00	11,722.27	110.15%	493,518.81	1,386,000.00	-892,481.19	35.61%
Total 4000 Offering	\$ 128,339.94	\$ 116,333.33	\$ 12,006.61	110.32%	\$ 498,686.87	\$ 1,396,000.00	-\$ 897,313.13	35.72%
4050 Designated Gifts			0.00		0.00	0.00	0.00	
4052 Other Designated Gifts	-150.00		-150.00		0.00	0.00	0.00	
4053 On-line Processing Fee	196.11		196.11		921.41	0.00	921.41	
Total 4050 Designated Gifts	\$ 46.11	\$ 0.00	\$ 46.11		\$ 921.41	\$ 0.00	\$ 921.41	
4700 Misc. Income			0.00		0.00	0.00	0.00	
4701 Interest Income-Chg/Svg			0.00		0.00	0.00	0.00	
4701-01 First Texas Bank	1.85	1.57	0.28	117.83%	11.59	18.84	-7.25	61.52%
4701-04 Texas Dist CEF Svs	645.73	269.21	376.52	239.86%	2,163.92	3,230.60	-1,066.68	66.98%
4701-05 Tx Dist CEF Mtg Acct	160.66	108.98	51.68	147.42%	584.30	1,307.76	-723.46	44.68%
4701-06 TX Dist CEF-Prof. Dev.	19.69	13.01	6.68	151.35%	78.67	156.12	-77.45	50.39%
4701-07 TX Dist CEF-Miss Plt #2	36.16	23.89	12.27	151.36%	144.45	286.68	-142.23	50.39%
Total 4701 Interest Income	\$ 864.09	\$ 416.66	\$ 447.43	207.38%	\$ 2,982.93	\$ 5,000.00	-\$ 2,017.07	59.66%
Total 4700 Misc. Income	\$ 864.09	\$ 416.66	\$ 447.43	207.38%	\$ 2,982.93	\$ 5,000.00	-\$ 2,017.07	59.66%
Total Income	\$ 129,250.14	\$ 116,749.99	\$ 12,500.15	110.71%	\$ 502,591.21	\$ 1,401,000.00	-\$ 898,408.79	35.87%
Gross Profit	\$ 129,250.14	\$ 116,749.99	\$ 12,500.15	110.71%	\$ 502,591.21	\$ 1,401,000.00	-\$ 898,408.79	35.87%
Expenses								
5100 Outreach			0.00		0.00	0.00	0.00	
5180 Texas / Synod	11,000.00	11,000.00	0.00	100.00%	44,000.00	132,000.00	-88,000.00	33.33%
5181 Concordia	1,541.67	1,541.67	0.00	100.00%	6,166.68	18,500.00	-12,333.32	33.33%
5182 Caring Place	520.83	520.83	0.00	100.00%	2,083.32	6,250.00	-4,166.68	33.33%
5183 Concordia High School	520.83	520.83	0.00	100.00%	2,083.32	6,250.00	-4,166.68	33.33%
5186 Faith Lutheran Preschool		1,000.00	-1,000.00	0.00%	2,000.00	10,000.00	-8,000.00	20.00%
Total 5100 Outreach	\$ 13,583.33	\$ 14,583.33	-\$ 1,000.00	93.14%	\$ 56,333.32	\$ 173,000.00	-\$ 116,666.68	32.56%
5200 Pastoral			0.00		0.00	0.00	0.00	
5212 Conferences/Workshops		1,000.00	-1,000.00	0.00%	0.00	1,000.00	-1,000.00	0.00%
5219 Guest Pastor		25.00	-25.00	0.00%	300.00	300.00	0.00	100.00%
5220 Organizational Membership		0.00	0.00		100.00	100.00	0.00	100.00%
Total 5200 Pastoral	\$ 0.00	\$ 1,025.00	-\$ 1,025.00	0.00%	\$ 400.00	\$ 1,400.00	-\$ 1,000.00	28.57%
5300 Worship			0.00		0.00	0.00	0.00	
5301 Organist		666.67	-666.67	0.00%	1,400.00	8,000.00	-6,600.00	17.50%
5302 Choir Director		200.00	-200.00	0.00%	200.00	2,400.00	-2,200.00	8.33%
5303 Nursery Attendants	1,159.15	515.00	644.15	225.08%	2,479.17	6,180.00	-3,700.83	40.12%
5304 Nursery Supplies		12.50	-12.50	0.00%	43.32	150.00	-106.68	28.88%
5321 Altar Supplies	107.80	66.67	41.13	161.69%	800.01	800.00	0.01	100.00%
5324 Choir Music	117.24	66.67	50.57	175.85%	326.58	800.00	-473.42	40.82%
5325 Piano Tuning		450.00	-450.00	0.00%	0.00	900.00	-900.00	0.00%
5330 Handbell Music		8.33	-8.33	0.00%	0.00	99.96	-99.96	0.00%
5340 Praise Worship Music		66.67	-66.67	0.00%	0.00	800.04	-800.04	0.00%
5345 Section Leaders		520.00	-520.00	0.00%	0.00	5,200.00	-5,200.00	0.00%
5350 Instrumental Musicians	1,825.00	666.67	1,158.33	273.75%	3,215.00	8,000.00	-4,785.00	40.19%
5380 Annual Choir Concert		600.00	-600.00	0.00%	0.00	6,000.00	-6,000.00	0.00%
5390 Licensing		125.00	-125.00	0.00%	15.99	600.00	-584.01	2.67%

FAITH LUTHERAN CHURCH
Budget vs. Actuals: 2022 Budget - FY22 P&L
January - December 2022

	Apr 2022				Annual Total			
	Actual	Budget	over Budget	% of Budget	Actual	Budget	over Budget	% of Budget
Total 5300 Worship	\$ 3,209.19	\$ 3,964.18	-\$ 754.99	80.95%	\$ 8,480.07	\$ 39,930.00	-\$ 31,449.93	21.24%
5400 Community Outreach			0.00		0.00	0.00	0.00	
5420 Evangelism Supplies	284.83	83.33	201.50	341.81%	284.83	1,000.00	-715.17	28.48%
5425 Publicity	961.18	208.33	752.85	461.37%	2,032.43	2,500.00	-467.57	81.30%
5430 Community Events	404.54	583.33	-178.79	69.35%	2,792.52	7,000.00	-4,207.48	39.89%
5455 Outreach Endeavors		833.33	-833.33	0.00%	0.00	10,000.00	-10,000.00	0.00%
5456 Easter Pageant		0.00	0.00		50.00	200.00	-150.00	25.00%
Total 5400 Community Outreach	\$ 1,650.55	\$ 1,708.32	-\$ 57.77	96.62%	\$ 5,159.78	\$ 20,700.00	-\$ 15,540.22	24.93%
5500 Stewardship			0.00		0.00	0.00	0.00	
5526 Fall Stewardship Material		0.00	0.00		0.00	2,000.00	-2,000.00	0.00%
5528 Offering Envelopes		0.00	0.00		0.00	1,500.00	-1,500.00	0.00%
Total 5500 Stewardship	\$ 0.00	\$ 0.00	\$ 0.00		\$ 0.00	\$ 3,500.00	-\$ 3,500.00	0.00%
5600 Education			0.00		0.00	0.00	0.00	
5640 Sunday School	47.63	125.00	-77.37	38.10%	234.08	1,500.00	-1,265.92	15.61%
5641 Vacation Bible School		0.00	0.00		237.53	3,500.00	-3,262.47	6.79%
5642 Adult Bible Study	-108.00	125.00	-233.00	-86.40%	139.41	1,500.00	-1,360.59	9.29%
5643 Confirmation Materials	253.77	125.00	128.77	203.02%	253.77	1,500.00	-1,246.23	16.92%
5644 Library		4.17	-4.17	0.00%	0.00	50.00	-50.00	0.00%
5646 Special Events	23.58	41.67	-18.09	56.59%	274.84	500.00	-225.16	54.97%
5648 Compass Group		62.50	-62.50	0.00%	0.00	750.00	-750.00	0.00%
5650 Family Ministry	221.25	100.00	121.25	221.25%	706.47	1,200.00	-493.53	58.87%
5654 Rock House		100.00	-100.00	0.00%	0.00	1,200.00	-1,200.00	0.00%
5660 Kids Clubs	199.24	62.50	136.74	318.78%	220.23	750.00	-529.77	29.36%
5670 DCE Fieldworkers		208.33	-208.33	0.00%	0.00	2,500.00	-2,500.00	0.00%
5690 Workshops/Conferences		50.00	-50.00	0.00%	476.90	600.00	-123.10	79.48%
5691 Tract Racks		20.83	-20.83	0.00%	105.14	250.00	-144.86	42.06%
5692 Background Checks		125.00	-125.00	0.00%	0.00	1,500.00	-1,500.00	0.00%
Total 5600 Education	\$ 637.47	\$ 1,150.00	-\$ 512.53	55.43%	\$ 2,648.37	\$ 17,300.00	-\$ 14,651.63	15.31%
5700 Youth			0.00		0.00	0.00	0.00	
5710 Junior High Youth		83.33	-83.33	0.00%	29.91	1,000.00	-970.09	2.99%
5711 High School Youth	12.56	250.00	-237.44	5.02%	547.06	3,000.00	-2,452.94	18.24%
5712 Workshop/Conferences		125.00	-125.00	0.00%	0.00	1,500.00	-1,500.00	0.00%
5760 Counselor Expense		83.33	-83.33	0.00%	0.00	1,000.00	-1,000.00	0.00%
5761 Scholarships	595.00	83.33	511.67	714.03%	595.00	1,000.00	-405.00	59.50%
5762 National Youth Gathering		0.00	0.00		0.00	2,500.00	-2,500.00	0.00%
Total 5700 Youth	\$ 607.56	\$ 624.99	-\$ 17.43	97.21%	\$ 1,171.97	\$ 10,000.00	-\$ 8,828.03	11.72%
5800 Human Care			0.00		0.00	0.00	0.00	
5860 Habitat For Humanity		0.00	0.00		156.25	625.00	-468.75	25.00%
5865 Meals On Wheels		0.00	0.00		200.00	800.00	-600.00	25.00%
5866 Upbring		0.00	0.00		125.00	500.00	-375.00	25.00%
5870 Lutherans for Life		0.00	0.00		62.50	250.00	-187.50	25.00%
5872 Funeral Luncheons		166.67	-166.67	0.00%	0.00	2,000.00	-2,000.00	0.00%
5873 Stephen Ministry		83.33	-83.33	0.00%	0.00	1,000.00	-1,000.00	0.00%
5877 Sunshine Team	92.80	52.08	40.72	178.19%	694.25	625.00	69.25	111.08%
5878 Grief Process Group		25.00	-25.00	0.00%	0.00	300.00	-300.00	0.00%
5879 Mission Visions		8.33	-8.33	0.00%	0.00	100.00	-100.00	0.00%
5882 Heartfelt Stitchers		16.67	-16.67	0.00%	0.00	200.00	-200.00	0.00%
5883 Military Care Pkgs.		20.83	-20.83	0.00%	0.00	250.00	-250.00	0.00%
5890 Bread Of Life		33.33	-33.33	0.00%	0.00	400.00	-400.00	0.00%
5891 Faith In Action		0.00	0.00		200.00	800.00	-600.00	25.00%
5895 Pregnancy Help Center		0.00	0.00		62.50	250.00	-187.50	25.00%

FAITH LUTHERAN CHURCH
Budget vs. Actuals: 2022 Budget - FY22 P&L
January - December 2022

	Apr 2022				Annual Total			
	Actual	Budget	over Budget	% of Budget	Actual	Budget	over Budget	% of Budget
Total 5800 Human Care	\$ 92.80	\$ 406.24	-\$ 313.44	22.84%	\$ 1,500.50	\$ 8,100.00	-\$ 6,599.50	18.52%
5900 Congregation Support			0.00		0.00	0.00	0.00	
5921 New Member - Child Care		33.33	-33.33	0.00%	0.00	400.00	-400.00	0.00%
5945 Portals Of Prayer		250.00	-250.00	0.00%	997.75	3,000.00	-2,002.25	33.26%
5952 Activities-Child Care		12.50	-12.50	0.00%	0.00	150.00	-150.00	0.00%
5960 Visitation Ministry		41.67	-41.67	0.00%	0.00	500.00	-500.00	0.00%
5990 Church Worker Assistance		125.00	-125.00	0.00%	0.00	1,500.00	-1,500.00	0.00%
5995 New Member Materials		83.33	-83.33	0.00%	522.87	1,000.00	-477.13	52.29%
5996 40th Anniversary		0.00	0.00		0.00	1,000.00	-1,000.00	0.00%
Total 5900 Congregation Support	\$ 0.00	\$ 545.83	-\$ 545.83	0.00%	\$ 1,520.62	\$ 7,550.00	-\$ 6,029.38	20.14%
6000 Business Services/Adm.			0.00		0.00	0.00	0.00	
6010 Property/Liability Insurance		2,555.33	-2,555.33	0.00%	7,278.25	30,664.00	-23,385.75	23.74%
6015 W Comp Insurance		0.00	0.00		520.80	2,150.00	-1,629.20	24.22%
6020 Office Supplies	758.24	416.67	341.57	181.98%	1,893.62	5,000.00	-3,106.38	37.87%
6025 Accounting Services	2,004.00	2,004.00	0.00	100.00%	7,249.00	23,000.00	-15,751.00	31.52%
6030 Postage	13.58	250.00	-236.42	5.43%	791.27	3,000.00	-2,208.73	26.38%
Total 6000 Business Services/Adm.	\$ 2,775.82	\$ 5,226.00	-\$ 2,450.18	53.12%	\$ 17,732.94	\$ 63,814.00	-\$ 46,081.06	27.79%
6100 Assimilation			0.00		0.00	0.00	0.00	
6102 Orientation Program	318.95	166.66	152.29	191.38%	318.95	2,000.00	-1,681.05	15.95%
Total 6100 Assimilation	\$ 318.95	\$ 166.66	\$ 152.29	191.38%	\$ 318.95	\$ 2,000.00	-\$ 1,681.05	15.95%
6200 Technology & Media			0.00		0.00	0.00	0.00	
6201 Computer System		208.33	-208.33	0.00%	0.00	2,500.00	-2,500.00	0.00%
6202 Computer Repairs	40.00	166.67	-126.67	24.00%	120.00	2,000.00	-1,880.00	6.00%
6203 Computer Software	1,730.18	1,238.92	491.26	139.65%	6,110.13	14,867.00	-8,756.87	41.10%
6205 Vanco Host Fee	20.00	20.00	0.00	100.00%	80.00	240.00	-160.00	33.33%
6206 New Server		333.33	-333.33	0.00%	0.00	4,000.00	-4,000.00	0.00%
6210 Networking, DSL		240.00	-240.00	0.00%	666.27	2,880.00	-2,213.73	23.13%
6240 Audio/Video Equipment	1,288.15	208.33	1,079.82	618.32%	1,368.24	2,500.00	-1,131.76	54.73%
6241 Sound Technicians	2,601.25	1,166.67	1,434.58	222.96%	4,563.75	14,000.00	-9,436.25	32.60%
6250 Printer/Copier Contracts	2,185.58	1,833.33	352.25	119.21%	6,282.34	22,000.00	-15,717.66	28.56%
Total 6200 Technology & Media	\$ 7,865.16	\$ 5,415.58	\$ 2,449.58	145.23%	\$ 19,190.73	\$ 64,987.00	-\$ 45,796.27	29.53%
6300 Property			0.00		0.00	0.00	0.00	
6301 Facilities Management	1,621.98	4,213.17	-2,591.19	38.50%	23,178.72	50,558.00	-27,379.28	45.85%
6320 Supplies		583.33	-583.33	0.00%	1,418.00	7,000.00	-5,582.00	20.26%
6360 Bldg.Furn/Maint Equip		41.67	-41.67	0.00%	0.00	500.00	-500.00	0.00%
6371 Propane		250.00	-250.00	0.00%	0.00	3,000.00	-3,000.00	0.00%
6372 Utilities	4,053.57	5,833.33	-1,779.76	69.49%	22,597.82	70,000.00	-47,402.18	32.28%
6374 Maintenance & Repair		458.33	-458.33	0.00%	315.45	5,500.00	-5,184.55	5.74%
6376 Major Projects	925.00	5,000.00	-4,075.00	18.50%	925.00	60,000.00	-59,075.00	1.54%
6378 Education Wing Update		1,339.00	-1,339.00	0.00%	0.00	16,068.00	-16,068.00	0.00%
6390 Maintenance Contracts		1,583.33	-1,583.33	0.00%	2,924.56	19,000.00	-16,075.44	15.39%
Total 6300 Property	\$ 6,600.55	\$ 19,302.16	-\$ 12,701.61	34.20%	\$ 51,359.55	\$ 231,626.00	-\$ 180,266.45	22.17%
6800 Bank Expenses			0.00		55.93	0.00	55.93	
6810 Service Fees		0.00	0.00		0.00	20.00	-20.00	0.00%
6812 Mortgage Interest Paid	4,780.08	4,800.00	-19.92	99.59%	13,514.14	57,360.00	-43,845.86	23.56%
6813 Vanco Processing Fees	637.47	583.33	54.14	109.28%	2,544.57	7,000.00	-4,455.43	36.35%
6820 Safe Deposit Box		0.00	0.00		20.00	20.00	0.00	100.00%
Total 6800 Bank Expenses	\$ 5,417.55	\$ 5,383.33	\$ 34.22	100.64%	\$ 16,134.64	\$ 11,840.00	\$ 4,294.64	136.27%
7000 Parish Ministry & Fellowship			0.00		0.00	0.00	0.00	
7010 Coffee/Condiments	270.15	150.00	120.15	180.10%	728.90	1,800.00	-1,071.10	40.49%

FAITH LUTHERAN CHURCH
Budget vs. Actuals: 2022 Budget - FY22 P&L
January - December 2022

	Apr 2022				Annual Total			
	Actual	Budget	over Budget	% of Budget	Actual	Budget	over Budget	% of Budget
7020 Congregational Picnic		0.00	0.00		0.00	2,500.00	-2,500.00	0.00%
7030 Parish Min & Fellow (Othe)	148.78	58.33	90.45	255.07%	403.48	700.00	-296.52	57.64%
7031 Lent/Advent Meals		200.00	-200.00	0.00%	0.00	1,000.00	-1,000.00	0.00%
Total 7000 Parish Ministry & Fellw	\$ 418.93	\$ 408.33	\$ 10.60	102.60%	\$ 1,132.38	\$ 6,000.00	-\$ 4,867.62	18.87%
8000 Employee Expenses			0.00		0.00	0.00	0.00	
8010 Payroll Expense	30,115.09	30,441.59	-326.50	98.93%	122,900.12	374,299.13	-251,399.01	32.83%
8011 Vitality Well Allocation		0.00	0.00		0.00	500.00	-500.00	0.00%
8020 Employee Benefits	9,382.36	9,356.91	25.45	100.27%	35,961.41	112,283.00	-76,321.59	32.03%
8025 Health Reimbursement		408.33	-408.33	0.00%	207.01	4,900.00	-4,692.99	4.22%
8030 Auto Allowance	533.32	758.33	-225.01	70.33%	2,133.28	9,100.00	-6,966.72	23.44%
8050 Housing Allowance	9,887.48	8,787.49	1,099.99	112.52%	36,799.92	105,449.87	-68,649.95	34.90%
Total 8000 Employee Expenses	\$ 49,918.25	\$ 49,752.65	\$ 165.60	100.33%	\$ 198,001.74	\$ 606,532.00	-\$ 408,530.26	32.64%
Total Expenses	\$ 93,096.11	\$ 109,662.60	-\$ 16,566.49	84.89%	\$ 381,085.56	\$ 1,268,279.00	-\$ 887,193.44	30.05%
Net Operating Income	\$ 36,154.03	\$ 7,087.39	\$ 29,066.64	510.12%	\$ 121,505.65	\$ 132,721.00	-\$ 11,215.35	91.55%
Net Income	\$ 36,154.03	\$ 7,087.39	\$ 29,066.64	510.12%	\$ 121,505.65	\$ 132,721.00	-\$ 11,215.35	91.55%

Wednesday, May 18, 2022 06:21:15 AM GMT-7 - Cash Basis